

Diver Platform® COVID-19 Post-Discharge Package



Dimensional Insight COVID-19 Post-Discharge Package

The U.S. Centers for Disease Control & Prevention (CDC), in conjunction with other stakeholder organizations, has provided guidance for ICD-10 coding of COVID-19 related healthcare activities.

Dimensional Insight is offering its customers a complementary COVID-19 Post-Discharge Package containing the relevant measures. This information will be important for reporting to government agencies, analyzing transmission patterns, future research, and reimbursement.

The COVID-19 Post-Discharge Package requires data from the Dimensional Insight Hospital Operations™ application. If you are not sure if you have Hospital Operations, please contact your Dimensional Insight account representative.

What the Support Package Includes:

- 29 measures with embedded metadata documentation supported by:
 - 24 rules
 - 17 flag table entries
 - 1 new ICD-10 code: U07.1 "COVID-19"
- 6 dashboard pages
- Measure Dictionary supplement
- Menu tile icon for integrating package into Hospital Operations dashboards
- Measures can be included in either conventional or self-service dashboards
- Package can be installed by customer (using instructions provided) or by Dimensional Insight support team
- Package can be extended for a customer's specific needs

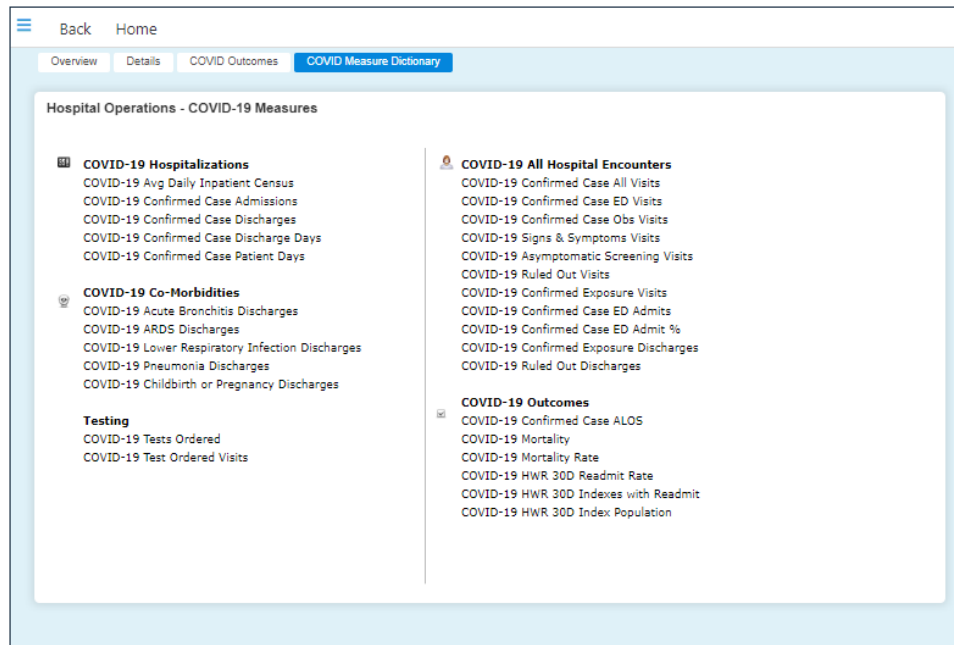
Measures Include:

- COVID-19 Acute Bronchitis Discharges
- COVID-19 ARDS Discharges
- COVID-19 Asymptomatic Screening Visits
- COVID-19 Average Daily Inpatient Census
- COVID-19 Childbirth or Pregnancy Discharges
- COVID-19 Confirmed Case Admissions
- COVID-19 Confirmed Case All Visits
- COVID-19 Confirmed Case ALOS
- COVID-19 Confirmed Case Discharge Days
- COVID-19 Confirmed Case Discharges
- COVID-19 Confirmed Case ED Admit %
- COVID-19 Confirmed Case ED Admits
- COVID-19 Confirmed Case ED Visits
- COVID-19 Confirmed Case Obs Visits
- COVID-19 Confirmed Case Patient Days
- COVID-19 Confirmed Exposure Discharges
- COVID-19 Confirmed Exposure Visits
- COVID-19 HWR 30-Day Readmit Rate
- COVID-19 HWR 30-Day Indexes with Readmits
- COVID-19 HWR 30-Day Index Population
- COVID-19 Lower Respiratory Infection Discharges
- COVID-19 Mortality
- COVID-19 Mortality Rate
- COVID-19 Pneumonia Discharges
- COVID-19 Ruled Out Discharges
- COVID-19 Ruled Out Visits
- COVID-19 Signs & Symptoms Visits
- COVID-19 Tests Ordered Visits
- COVID-19 Tests Ordered

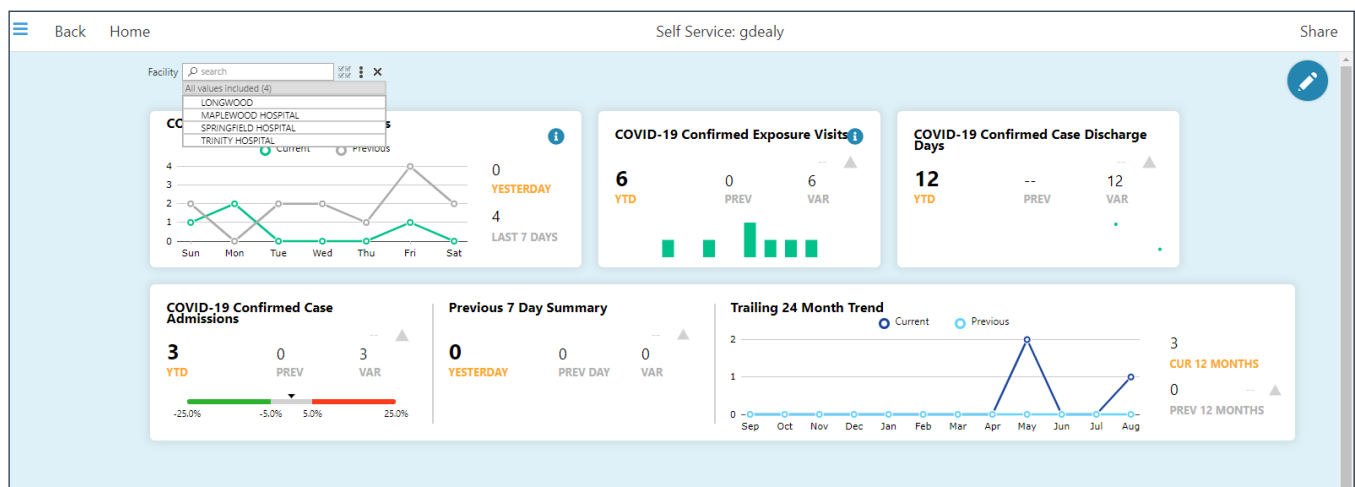
Screenshot of ICD-10 Measures Overview

Back Home		COVID-19 Post Discharge				Share Print Edit	
Overview		Hospitalizations		Co-Morbidities		All Hospital Encounters	
Outcomes							
Facility All Values (4)		Calendar Standard		Last Refreshed: Thursday, July 2, 2020 at 17:35		Beginning Month: 2020-01	
				Year-to-Date Summary		Ending Month: 2020-08	
Measures		MONTH TO DATE		CURRENT COMPLETE MONTH		YEAR TO DATE	
		Sep-2020	Sep-2019	% +/-	Aug-2020	Aug-2019	% +/-
COVID-19 Hospitalizations							
COVID-19 Avg Daily Inpatient Census					1.00		1.33
COVID-19 Confirmed Case Admissions		0	0		1	0	3
COVID-19 Confirmed Case Discharges		0	0		1	0	3
COVID-19 Confirmed Case Discharge Days					2		12
COVID-19 Confirmed Case Patient Days					2		12
COVID-19 Co-Morbidities							
COVID-19 Acute Bronchitis Discharges		0	0		1	0	1
COVID-19 ARDS Discharges		0	0		0	0	1
COVID-19 Lower Respiratory Infection Discharges		0	0		0	0	0
COVID-19 Pneumonia Discharges		0	0		0	0	0
COVID-19 Childbirth or Pregnancy Discharges		0	0		0	0	1
COVID-19 All Hospital Encounters							
COVID-19 Confirmed Case All Visits		0	0		2	0	6
COVID-19 Confirmed Case ED Visits		0	0		2	0	5
COVID-19 Confirmed Case ED Admits		0	0		1	0	2
COVID-19 Confirmed Case ED Admit %					50.00		40.00
COVID-19 Confirmed Case Obs Visits		0	0		0	0	0
COVID-19 Signs & Symptoms Visits		44	136	-67.6% ▼	124	184	-32.6% ▼
COVID-19 Asymptomatic Screening Visits		0	0		1	0	1
COVID-19 Confirmed Exposure Visits		0	0		0	0	6
COVID-19 Ruled Out Visits		0	0		1	0	1
COVID-19 Confirmed Exposure Discharges		0	0		0	0	0
COVID-19 Ruled Out Discharges		0	0		0	0	0
COVID-19 Outcomes							
COVID-19 Confirmed Case ALOS					2.00		4.00
COVID-19 Mortality		0	0		0	0	0
COVID-19 Mortality Rate					0.00		0.00

Screenshot of COVID-19 Measure Dictionary



Screenshot of COVID-19 Measures Available in Self-Service



Dimensional Insight COVID-19 Command Center

Dimensional Insight's COVID-19 Command Center contains three separate packages so hospitals can track patients both in and out of the hospital, as well as financial data for federal and state reimbursements. Here are the details of the three separate packages:

1. COVID-19 Capacity Management Package

Hospitals can use this package to track the COVID-19 patient population in the hospital and determine capacity of various units. It provides a comprehensive approach to assessing, monitoring, and actively managing the COVID-19 patient population. The dashboards are geared towards providing insight into the number of COVID-19 patients—both suspected and diagnosed—regarding counts, locations, severity of illness, disposition, and testing on an hourly basis.

2. COVID-19 Post-Discharge Package

Hospitals receive access to 29 measures that will be important for reporting to government agencies, analyzing transmission patterns, future research, and reimbursement.

3. COVID-19 Lost Opportunity Decision Support Package

This package helps hospitals track financial data on cancelled procedures and office visits, no-shows, telehealth encounters, and more—to help maximize potential reimbursements.

Consulting & Customer Support

Dimensional Insight's professional services team offers an array of services that span the entire project lifecycle—from needs assessment to system maintenance. Our consultants employ best-in-class project delivery practices to design, implement, and customize your Diver deployment. Our consultants draw on their extensive knowledge of healthcare to deliver optimal results, faster implementations, and cost savings for our clients. We partner with each of our customers to ensure rapid implementation of all BI project initiatives. Our #1 objective is to provide the expertise and process knowledge to maximize return-on-investment and minimize risk.

Training Options

Diver training helps users, developers, and IS/IT staff fully understand and benefit from the power of Diver. Courses are delivered on-site at customer organizations or online. Courses can be customized to meet specific needs and organizational challenges.

Diver is a Complete BI Platform

Every implementation includes the installation of all back-end server and production components. There are no hidden costs or expensive third-party tools required to deploy additional features. Users access data through a number of interface options depending on their specific information-viewing and analysis needs.

SEE OUR CUSTOMER RATINGS IN ANALYST RESEARCH



Gartner
peer insights™



About Dimensional Insight

Dimensional Insight is a leading provider of analytics, data management, and performance management solutions, offering a complete portfolio of capabilities ranging from data integration and modeling to sophisticated reporting, analytics, and dashboards. The company is an eight-time Best in KLAS winner in healthcare business intelligence and analytics from 2010 to 2021. Founded in 1989, Dimensional Insight has thousands of customer organizations worldwide. Dimensional Insight consistently ranks as a top performing analytics organization by customers and industry analysts in its core market segments including healthcare, manufacturing, and beverage alcohol. For more information, please visit <https://www.dimins.com/>.



60 Mall Road
Burlington, MA 01803
t: 781.229.9111
www.dimins.com

© 2022 Dimensional Insight Inc. All Rights Reserved. Dimensional Insight and Diver are either registered trademarks or trademarks of Dimensional Insight Inc. All other trademarks cited herein are the property of their respective owners.